

# GX8

## Elevated industrial-class performance for applications requiring immense precision and accuracy at a competitive price

- Battery-less manipulator for reduced maintenance time and equipment downtime
- Improved cable fixing convenience on arm 2 with user screw holes
- Simplified MC cable attach/detachment for easy installation of robot
- Extended length of Z stroke from 180mm to 200mm



**Model Number** **GX 8 - A 45 2 S □ - R - UL**

SKU first name: **GX**

Payload: **8** : 8kg

Versions: **A** version

Arm length: **45** : 450mm, **55** : 550mm, **65** : 650mm

Joint #3 stroke: **2** : 200mm, **3** : 330mm

UL specification: □ : Non UL applicable, **UL** : UL applicable

Mounting type: □ : Table Top Mounting, **W** : Wall Mounting, **R** : Ceiling Mounting

Cable direction: □ : Backward, **B** : Bottom

Environment: **S** : Standard, **C** : Clean + ESD, **P** : IP65, **E** : ESD

## Specifications

Model Name		GX8-A		
Model Number		GX8-A45□□□□□	GX8-A55□□□□□	GX8-A65□□□□□
Arm length	Joints #1 + #2 (mm)	450	550	650
Payload*1	Rated (kg)	4		
	Maximum (kg)	8		
Repeatability	Joints #1 + #2 (mm)	+/- 0.015		
	Joint #3 (mm)	+/- 0.010		
	Joint #4 (deg)	+/- 0.005		
Standard cycle time*2	(sec)	0.28	0.30	0.33
Max. operating speed	Joints #1 + #2 (mm/s)	7450	8450	9460
	Joint #3 (mm/s)	2350		
	Joint #4 (deg/s)	2800		
Joint #4 allowable moment of inertia*4	Rated (kg·m <sup>2</sup> )	0.01		
	Maximum (kg·m <sup>2</sup> )	0.16		
Joint #3 down force	(N)	150		
Installation environment	S: Standard, C: Cleanroom*4 & ESD*5, P: IP65, E: ESD*5			
Mounting type	□: Table Top, W: Wall, R: Ceiling			
Cable exit direction	□: Rearward (Table Top, Ceiling) / Upward (Wall), B: Downward (Table Top only)			
Weight (cables not included)	(kg) or less	Table top, Ceiling : 33 / Wall : 35	Table top, Ceiling : 34 / Wall : 36	Table top, Ceiling : 35 / Wall : 37
Applicable controller	RC700-D			
Installed wire for customer use	D-sub 15 pin x1, 9 pin x1, 8 pin (RJ45) x1			
Installed pneumatic tube for customer use	ø4mm x2, ø6mm x2 : Allowable pressure 0.59 MPa (6 kgf/cm <sup>2</sup> )			
Power	(V)	AC200-240 Single phase		
Power consumption*7	(kVA)	2.2		
Cable length*8	(m)	3 / 5 / 10 / 15 / 20		
Safety standard	CE, UKCA			

\*1: Do not apply the load exceeding the maximum payload.

\*2: Cycle time based on round-trip arch motion (300 mm horizontal, 25 mm vertical) at rated payload setting of table top model boost mode (path coordinates optimized for maximum speed)

\*3: Set the parameters by the Inertia command according to the load and end effector status (refer to the instruction manual for the parameter calculation method).

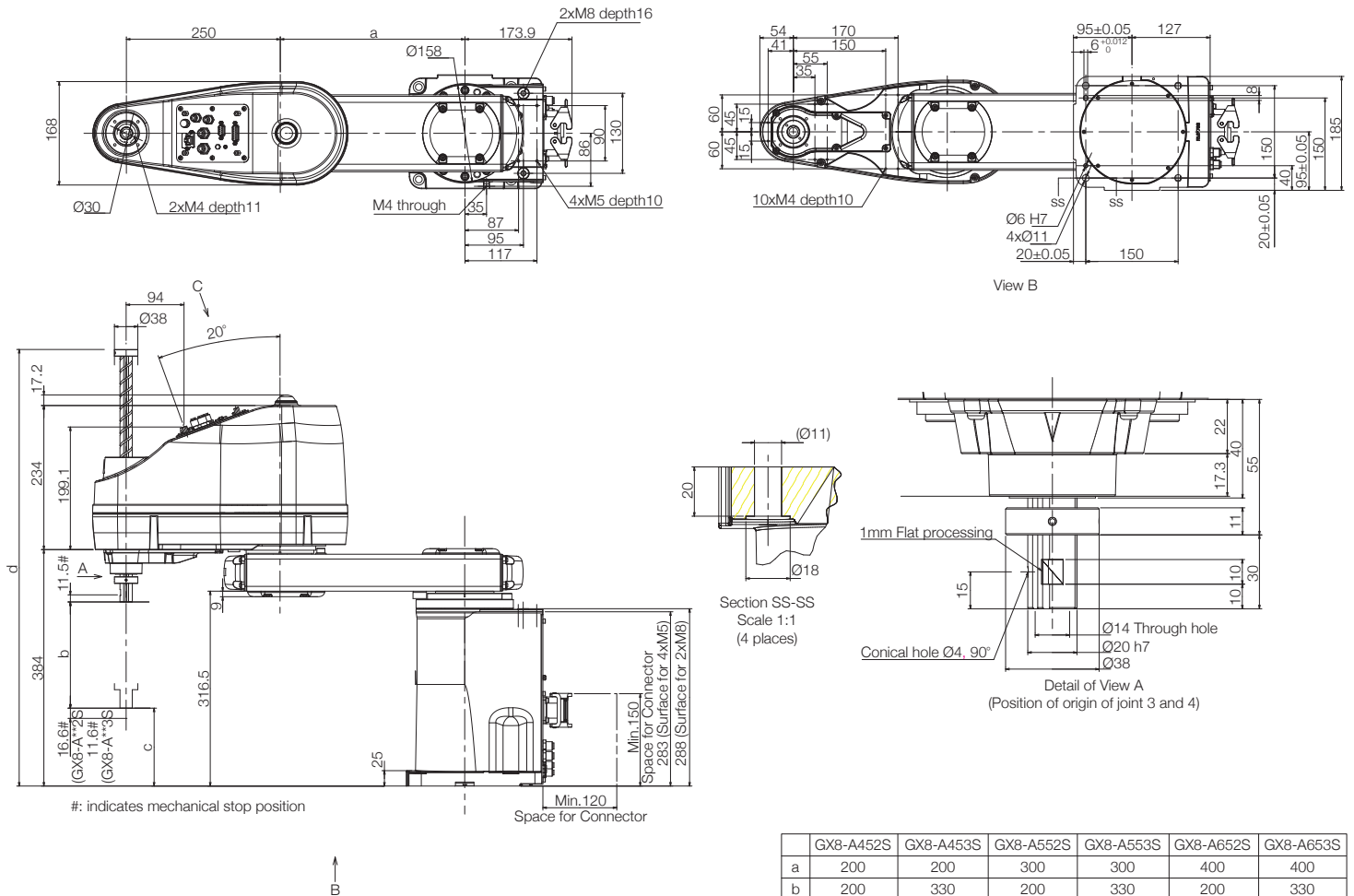
\*4: Complies with ISO Class 3 (ISO14644-1) and Fed-std209D Class 1 (less than 10 0.1 μm particles per 28.317cm<sup>3</sup>:1cft) cleanroom standards.

\*5: Resin covers are plated with electrolytic nickel to prevent static electricity, and the potential difference is ± 5V or less.

\*6: Varies according to operating environment and program.\*7: Varies according to operating environment and program.

\*8: Standard cable (not flexible cable)

## Outer Dimensions (Table Top Mounting) [Unit: mm]



## Motion Range (Table Top Mounting) [Unit: mm]

